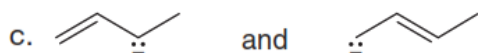
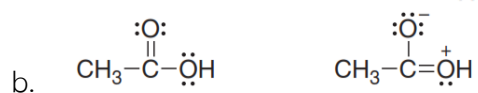
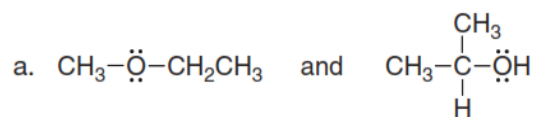
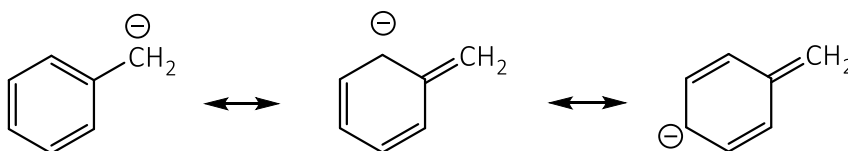


**Homework in a flipped class**  
**Lecture 4.1 (part 1)**

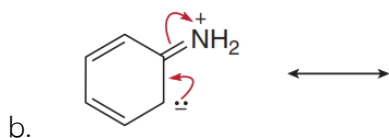
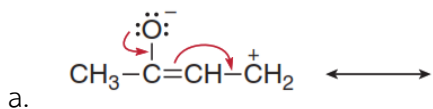
1) Classify each pair of compounds as isomer or resonance structure.



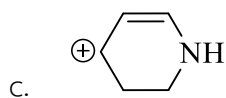
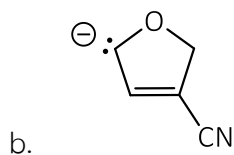
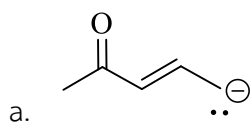
2) Add curved arrows to show how the first resonance structure can be converted into the second.



3) Follow the curved arrows to draw a second resonance structure for each species.



4) Draw the all resonance structures, and designate the one that would contribute most to the hybrid (major and minor contributors) and explain your choice.



5) Rank the following compounds in order of increasing acidity.

